

**Factory Productivity improvement  
through Time & Operation Standardization**

**TMIS**

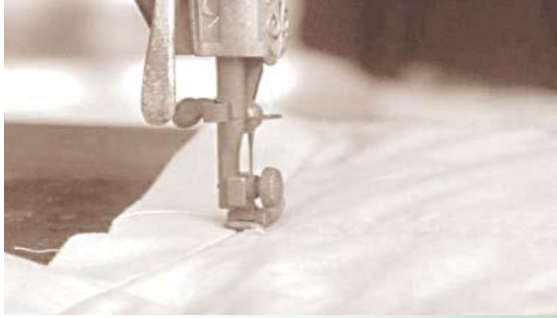
**(TIME MANAGEMENT INTEGRATED SOLUTION)**

**An Introduction of**

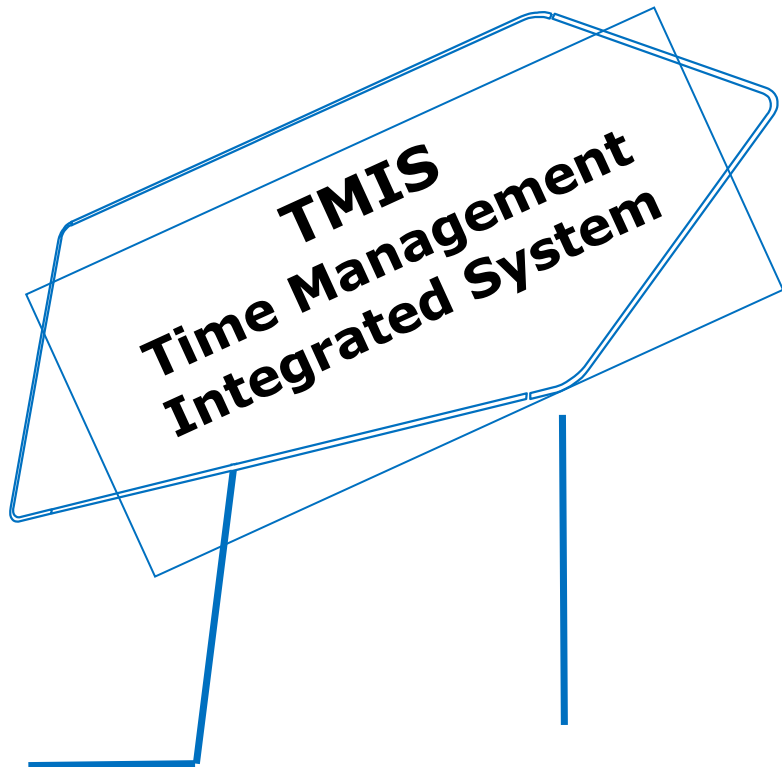
**The Company**

**&**

**The Product**



# TMIS



TMIS (International) Ltd

*Standardization Creates Values*

**Company**

## **Business Information**

- **Business Name:** **TMIS (International) Ltd**
- **Business Address:** Unit 603, 6/F Chow Sang Sang Building,  
229 Nathan Road, Kowloon, Hong Kong
- **Email:** info@tmisintl.com
- **Tel:** 852-90177818

## **General Business Activities**

**TMIS (International) LTD has been established as Soft-goods Application Software & Valued Added Consultancy Provider in Hong Kong.**

## **TMIS as a Product**

The core product **TMIS** (**Time Management Integrated System**) is system of productivity improvement tools tailored for fashion manufacturing industry.

# TMIS as a Company also act as a

## ONE STOP SOLUTION PROVIDER

For seamless service, which among other act as referral Agent for:



PRODUCTION PLANNING Tool for integrated Supply-chain & schedule tracking



iDUMMY automated Mannequin for Size fitting & flexible Pattern Engineering



RFID based Data Capture System for Workstation & Operators Control



AUTO-MOVER System for Production Assembly & Piece-flow System

# People





# Director

## **Mr Chaucer Chang**

- 28 years experience in Apparel Merchandising.
- Specialist & Subject Matter Experts in Brand Supply Chain Management.
- Proficient in System Integration of Standard Time Application, Production Planning Tool & Data Capture System.
- A Graduate of HKPU Institute of Textile & Clothing, Hong Kong

# Principal consultant

## **Zainuddin HM Yasin**

- A well honed Manufacturing, R&D n IE Specialist, focusing in the Apparel n Toy Industry.
- -38 years experience in the Apparel & Toy Mfg Industry, among others at Wing Tai Group HK, Crystal Group HK, & Mattel Incl. USA.
- -Alumni of NUS Business School, Singapore, & Graduate of HKPU Institute of Textile & Clothing, HK.
- -A Certified Lean Manager of HKPC, HK.

# Resultant specialist

## **T.K. Louie**

- General Manager, Superl Holding Ltd, : 2012 – 2017
- Summer Technology Ltd: 2010 - 2012
- General Manager, Crystal Apparel(Zhong Shan Yida Apparel) 2007 – 2008
- Deputy Vice President of IT, Li & Fung Trading: 2005 – 2007
- GM, China & Director of Asia Supply Chain, GERBER: 1997 – 2005
- Director & Deputy General Manager, National Garment Pte Ltd: 1991-1997

# Consultant Advisor

## **Dr Allan Chan**

- Dr Chan is a retired professor from the highly-rated Hong Kong Polytechnic University's Institute of Textiles & Clothing
- His expertise is in garment manufacture and engineering, pattern design and apparel fitting
- His research work has culminated into his award-winning invention;  
i.Dummy fitting robots

# Principal Trainer

## **Mr Stanley Hee**

- Specialist in Industrial Engineering, Garment Technical & on site Production Training & Support.
- - 28 years experience, among others at Sterling Products (Hong Kong) Ltd, Crystal Group & Clothing Industry Training Authority Hong Kong.
- - A Graduate of HKPU Institute of Textile & Clothing, HK

**Services**

## **The valued added service covers, but not limited to:**

- ***Productivity and Efficiency turnaround,***
- ***Big Data Mobile application in Apparel Manufacturing***
- ***IE Concept & Culture training,***
- ***LEAN Management training,***
- ***Automation project implementation,***
- ***Process Reengineering & Change Management***
- ***Product Engineering & Development.***

**TMIS**

**the System**



*Ever changing styles, short production runs, on-time delivery and low margins.....garment manufacturers need to be highly competitive.*

## **TMIS is a tool of**

- **Time – Cost benchmarking**
- **Productivity Improvement**
- **based on a scientific and ethical method analysis technique. (Method Time Measurement,MTM-2 )**



*Ever changing styles, short production runs, on-time delivery and low margins.....garment manufacturers need to be highly competitive.*

## **Productivity is improved through**

- **detailed analysis of existing methods**
- **objective comparison**
- **implementation of “best method”**



*E*ver changing styles, short production runs, on-time delivery and low margins.....garment manufacturers need to be highly competitive.

**TMIS is**

**A company-wide philosophy of  
continuous improvement.**

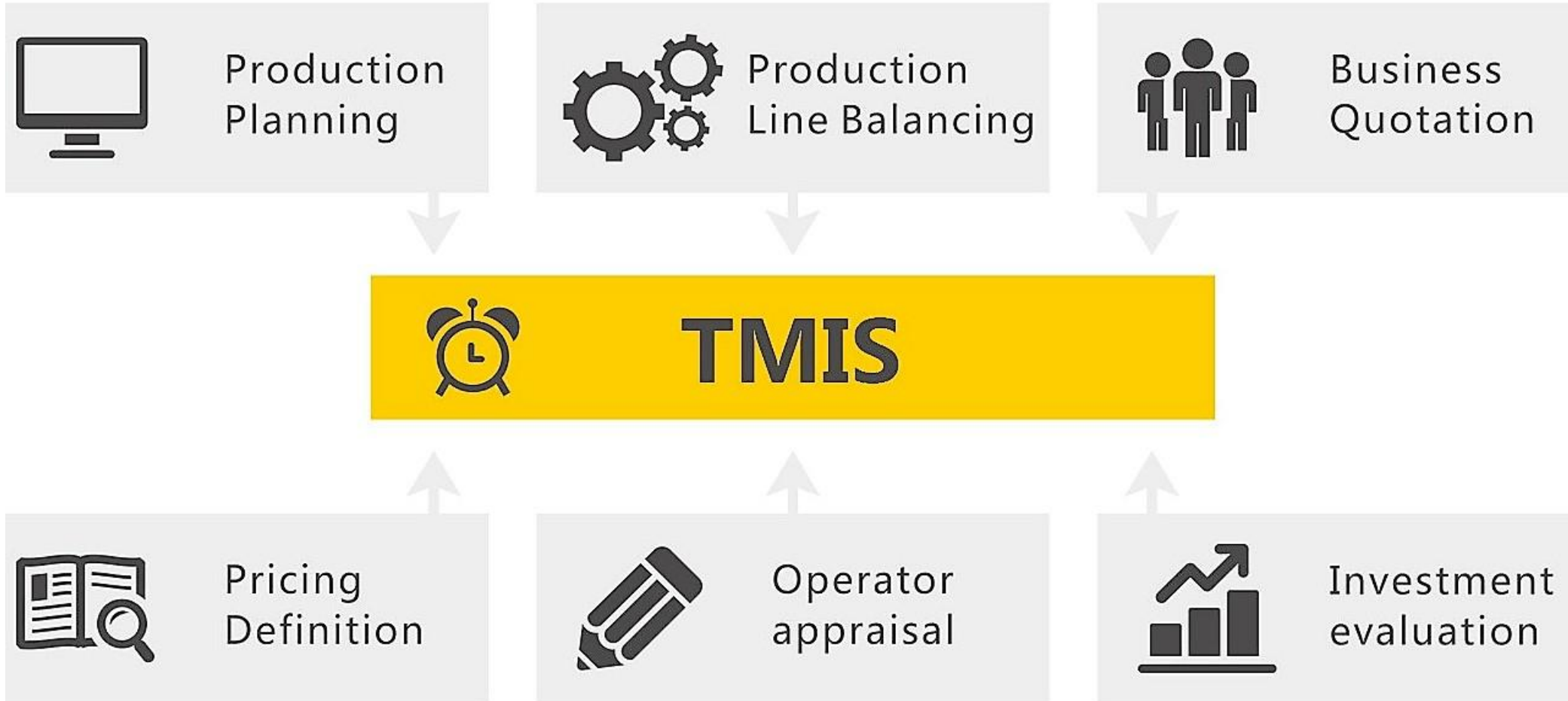


*E*ver changing styles, short production runs, on-time delivery and low margins.....garment manufacturers need to be highly competitive.

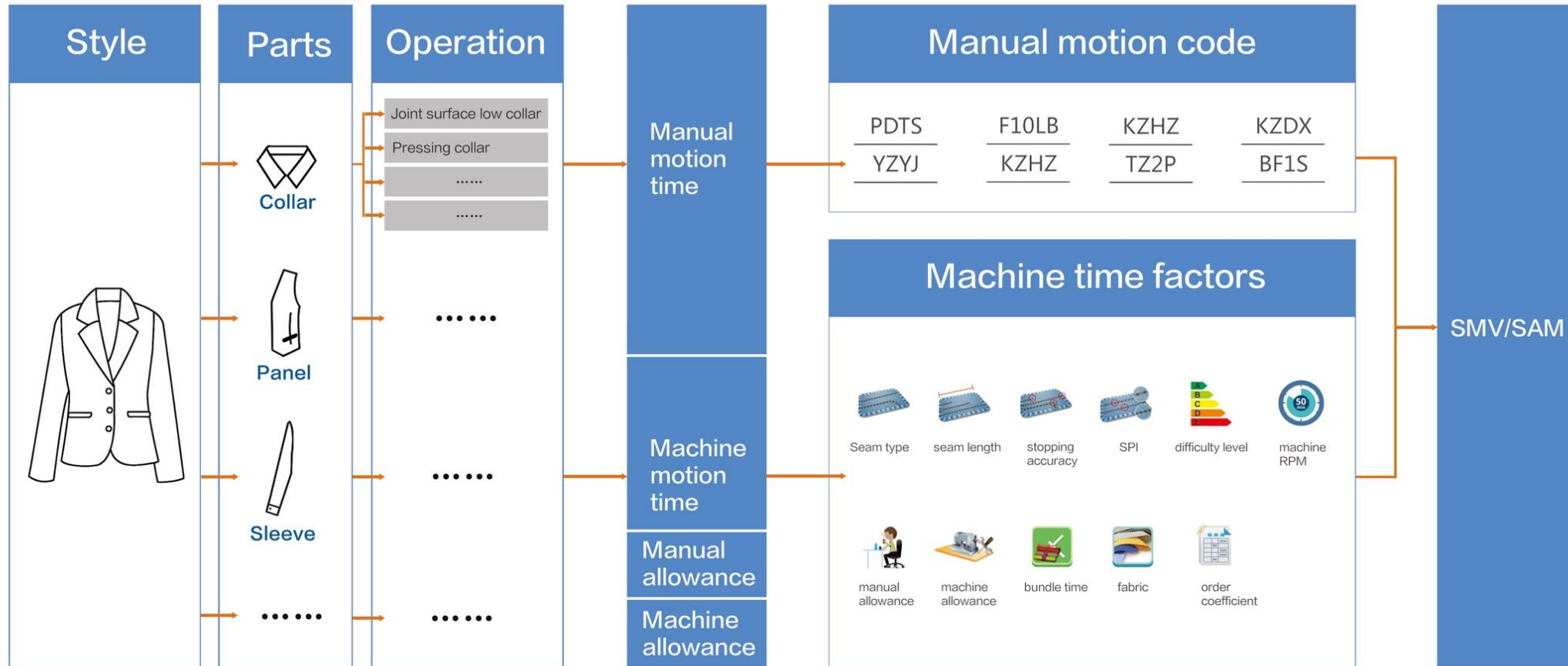
- **Factory efficiencies may be measured against international standards,**
- **precise costings,**
- **effective incentive schemes,**
- **properly balanced production lines**
- **a more productive workforce are all evident**



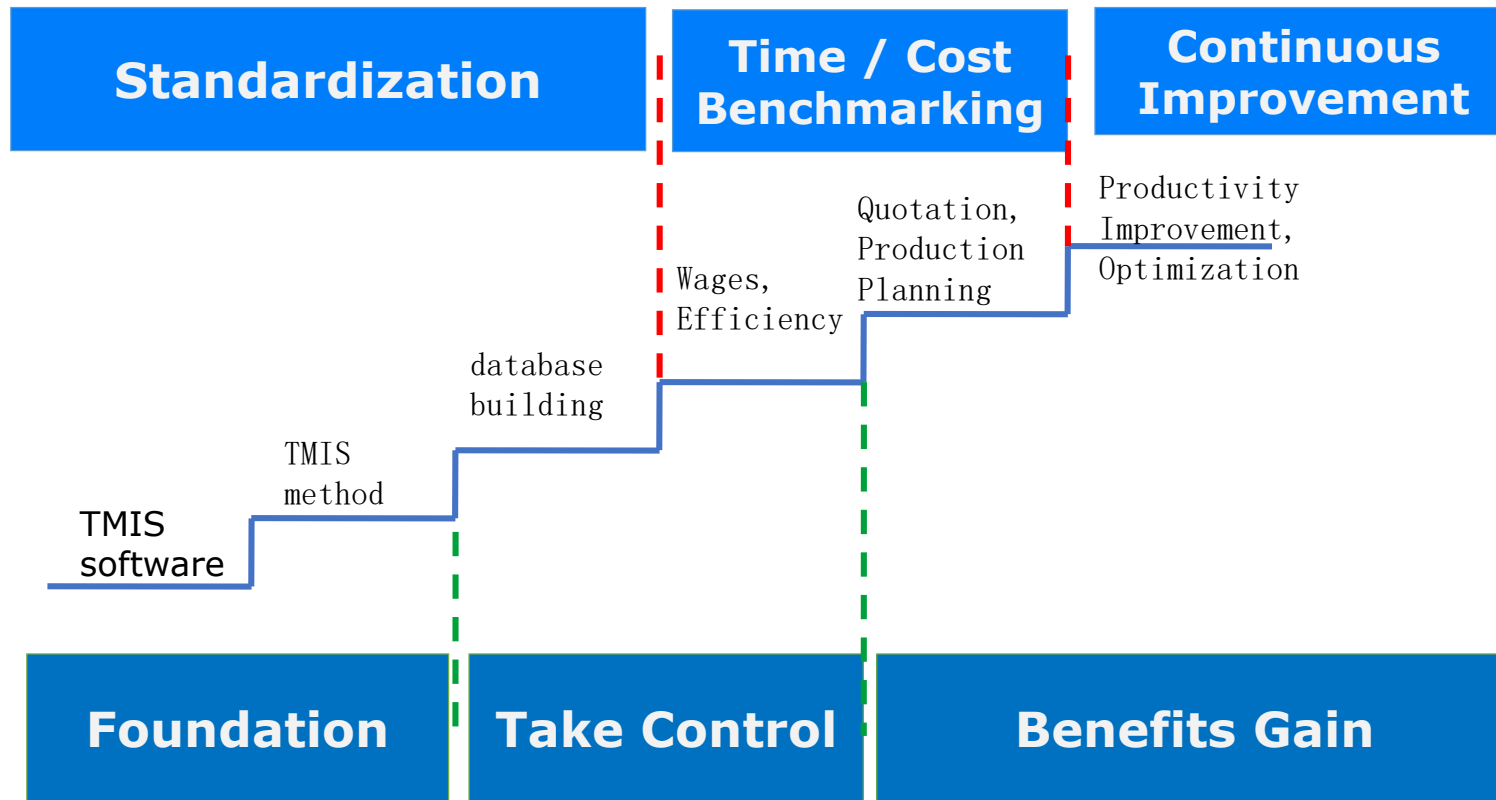
# TMIS 6 MAIN FUNCTIONS



# TIME (SMV) Benchmarking Mechanism



# TMIS ladder approach to success



# TMIS implementation steps

Prepare the infrastructures

1 Week

Coordinate with the organizations

2 Weeks

TMIS installation & analyst training

4 Weeks

Operation database building

6 Weeks





# ROI

- **A minimum 5% cost input improvement upon successful implementation**
- **USD250/month/sewer wages**
- **USD12.5/month/sewer cost improvement**
- **1000 sewers factory**
- **USD 12,500 month**
- **Payback is 1 year**

A good success **Productivity Improvement you** need a 6M

M1 : Material ( Delivery & Quality ) Team communication method.  
form. video (**auto gen Process Flow chart? Auto gen S.O.P.? Line balancing tools?**)

M2 : Method ( Assembly & handling ) **the real database tool? training of PMTS**

M3 : M&E ( Machine & Equipment ) **Master database?, Machinery requirement plan by style?**

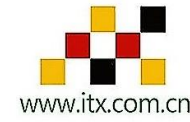
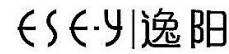
A good success **Productivity Improvement you** need a 6M

M4 : Manpower ( skill & efficiency ) **Management & Appraisal?**

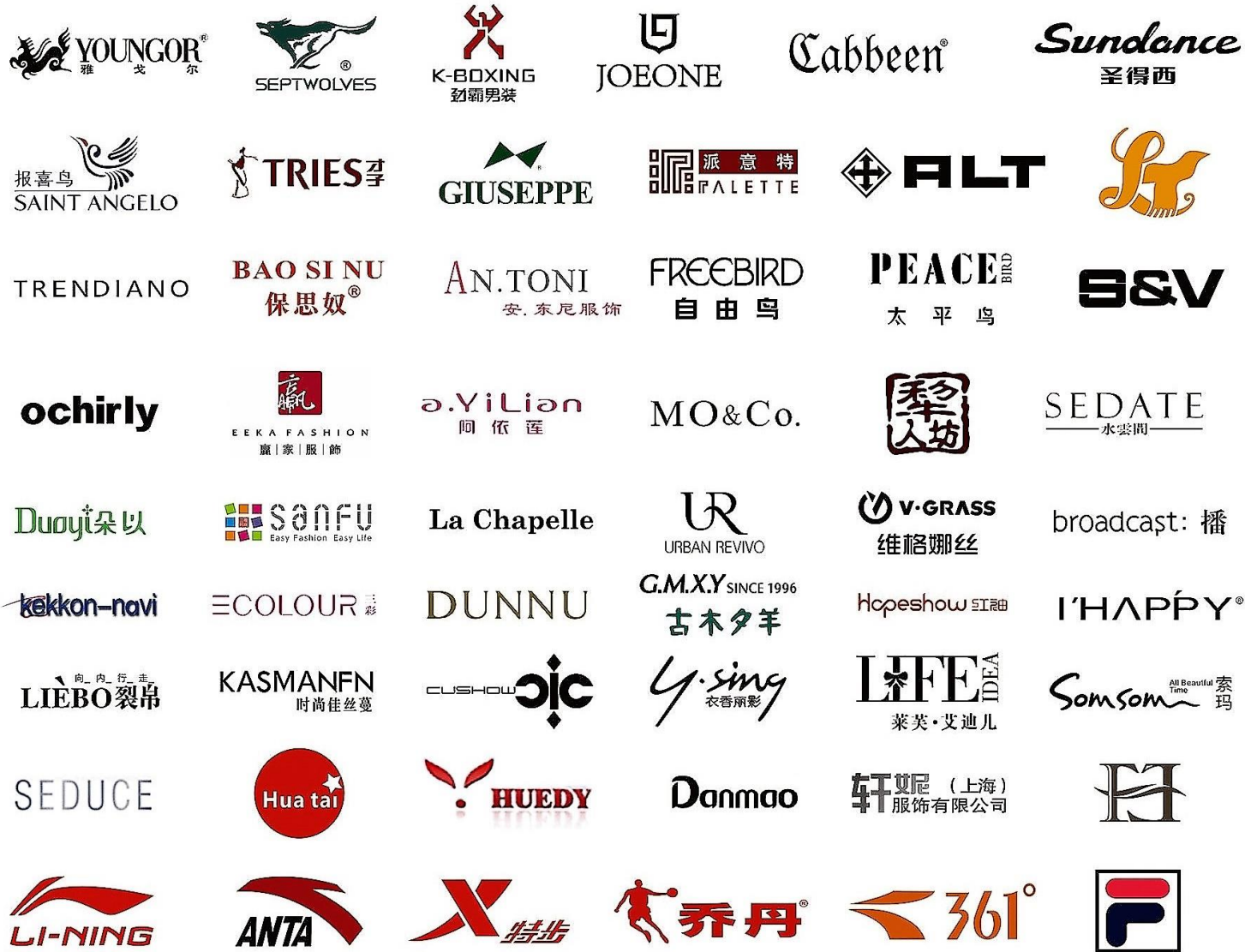
M5 : Measurement ( Standard & actual ) **people, process, performance, report, change management, mindset?**

M6 : Management ( Plan, control & execution ) **Mind set change, alignment, organization transformation ?**

# TMIS successful global Customers



# TMIS successful global Customers



**TMIS**

**ASSOCIATED  
PRODUCT**

# iDummy



winwin  
www.idummy.com

**MB-01**  
Male Bottom  
Body  
Weight:  
34.5KG  
Dimension:  
166X80X72cm



**MT-01**  
Male Top Body  
Weight:  
25.5KG  
Dimension:  
170X68X58cm



**MF-01**  
Male Full Body  
Weight:  
42KG  
Dimension:  
210X80X72cm



**FF-01**  
Female Full Body  
Weight:  
40KG  
Dimension:  
210X80X72cm



**FT-02**  
Female Top Body  
Weight:  
24KG  
Dimension:  
170X68X58cm



**FB-01**  
Female Bottom  
Body  
Weight:  
35KG  
Dimension:  
175X80X72cm





# i.Dummy®

## Revolutionary Robotic Mannequins



**Sized 3-Dimensionally in one mannequin**  
i.Dummy can be sized into different sizes, height and body shapes in just few seconds which can replace many sizes and shapes of dummies.



**Sustainable**  
The general average of body sizes will change every year. i.Dummy can be updated asap without extra cost.

**Easy save and load unlimited sizes**  
After the custom body size is made, user can simply save the configuration and reload next time. Unlimited on recorded sizes to replace many traditional dummies.

**Simple and easy to measure and control**  
A simple and user-friendly i.Dummy GUI is designed to enable control complicated fitting drive with few measurements.



**Standardise the sizes in the whole industry to increase the productivity**  
Users of i.Dummy can share their unique sizes with others along the supply chain to let the processes from development to the customers efficiently.

**Disruptive Technology**  
Sustainable, Cost Saving &  
Increase Productivity and Creativity

**winswin**  
Patented [www.idummy.com](http://www.idummy.com)

## Applications For the Entire Fashion Industry



**Business Managing**  
Use one i.Dummy for different size range from different brands. Get more business without extra costs.

**Product Developing**  
Make sure all design details perfectly in all Sizes to decrease the amount of Substandard

**Designing**  
Save Different Sizes for Every Unique Haute Couture Design

**Manufacturing**  
Fit and Design Quality checks for any size at anytime

**Trading**  
Use same Standard for Fitting increasing the Efficiency of Communication among Clients and Vendors

**Fitting**  
Revise the Updated Customer's Body Profiles in a Short Time

**Online Shopping**  
Fitting in Customers' Sizes when Shopping Online

**Retailing**  
Presentation and Display in the Perfect Sizes

**Educating**  
Excellent tool for Fashion Students

**winswin**  
[www.idummy.com](http://www.idummy.com)

Patented







# **Real Time Data Capture and Production Management Series**

## The statistical method of calculating salary --piecework by individual



ETS production management system seamlessly combines with the mode of piecework by individual. The wages of piecework by individual calculated as per the QTY of qualified product finished by personal, and integrate with ETS system, which can real time count every person's output, efficiency, wage, and realize the management of cargo tracing, delivery and quality control.





## The statistical method of calculating salary --piecework by group



ETS production management system seamlessly combines with the mode of piecework by group. The wages of piecework by group calculated as per the QTY of qualified product finished by group, and integrate with ETS system, which can real time count the group' s output, efficiency, and wage.



## Cargo Circulation

### --Traditional bundle/bundling flow



ETS production management system seamlessly combines with the mode of traditional bundle/bundling flow and each bundle QTY decided by the factory' rule,generally,the qty is 8 to 15 PCS,which is suitable for large quantity order and one off shipment is large





## Cargo Circulation --Small bundling flow



ETS production management system seamlessly combines with the mode of small bundle flow, and each bundle QTY decided by the factory' rule, generally, the qty is 3 to 5 PCS. Small bundle flow can accelerate the speed of cargo circulation, balanced the efficiency between workers to achieve smooth flow and speed up the delivery cycle.



## Cargo Circulation --Single piece flow



ETS production management system seamlessly combines with the mode of UPS single flow, and each bundle QTY decided by the factory' rule, generally, the qty is 1 PCS, which is suitable for massive order but qty and the style transition is fast and which can speed up the delivery cycle.





# **Product Automation Series**

## **Sewing automatic hanger system**



# Sewing automatic hanger system



## Improve the production efficiency

- Break through the bottleneck of product from launch to finish.
- Break through the waiting of link up between each working procedure.
- Break through waiting for pressing and packing.
- Break through the lag of checking.
- Reduce hauling, lessen the labor intensity.

## Integrated production and management together

- Create a good production environment, give full play to workers' initiative
- Quality issues appear, feedback timely
- Decrease management link, reduce management cost
- Make full use of the workshop venue





## Procedure:



## Hardware feature:

1. Terminal logic can inspect and control that the cloth hanger whether is available to enter workstation
2. Terminal can inspect that the main track whether is available
3. Different connecting line can easy to inspect and no need of computer's synchronization when they are bridging
4. It can put the clothes hanger on the main track by manual
5. It can continue to run after turn off the computer
6. Anyone workstation can be set as QA\QC workstation
7. Group leader's wireless devices no need to operate near the computer
8. Can connect the cutting, workshop, finishing as a whole system
9. Workstation adopt touch screen devices can realize a paperless office



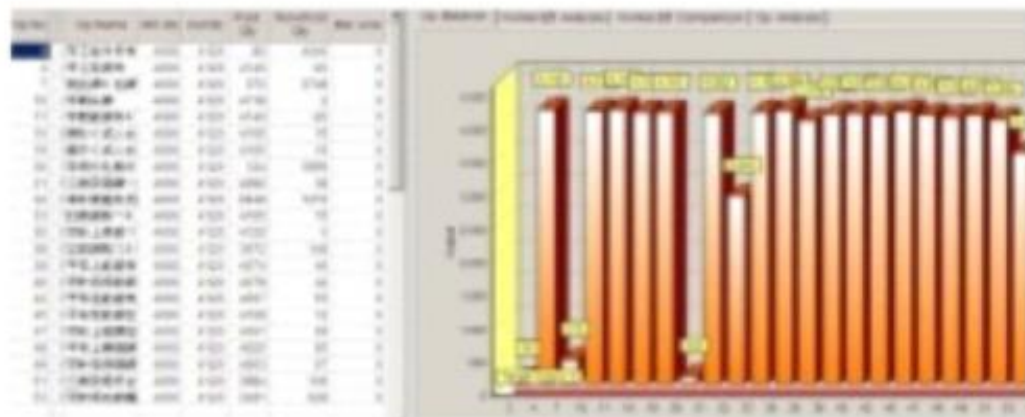
## Software feature:

1. Forecast the problem, according to the change trend and efficiency of WIP, dynamically adjust WIP
2. Set permissions level queue can dynamically adjust WIP
3. Can operate by manual (swipe tags on the terminal directly, use for manual adjustment)
4. Can dynamically adjust group (not limited to a physical space)
5. Can set a public regional with many skills, share resource
6. Can use ETS do a stable transition on emergency
7. Can deal with flexible subsidy
8. System can be off-standard
9. Can deal with sewing tag management system
10. Support QA\QC on-line
11. System can intelligent distribute the limited half-finished product to worker with high efficiency by the level of efficiency
12. System support to query the clothes hanger's direction of anyone workstation
13. Can integrate with ETS system, ERP (SAP) and salary system ( payroll )





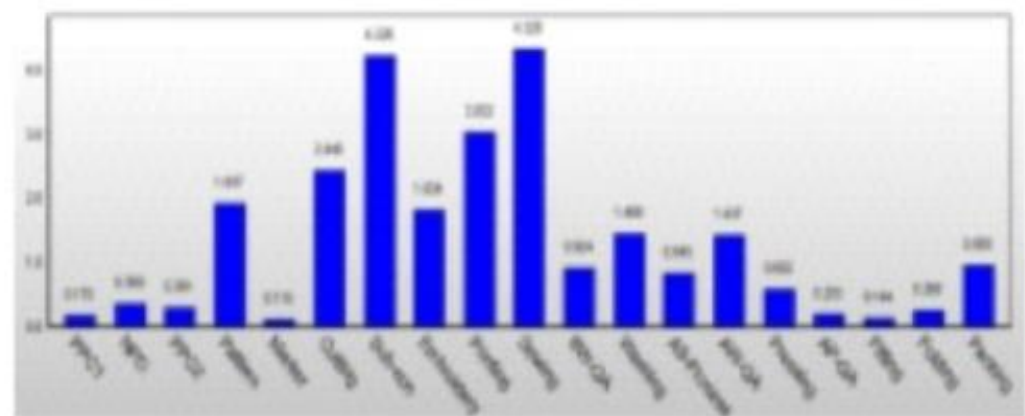
# The software of intelligent hanger system



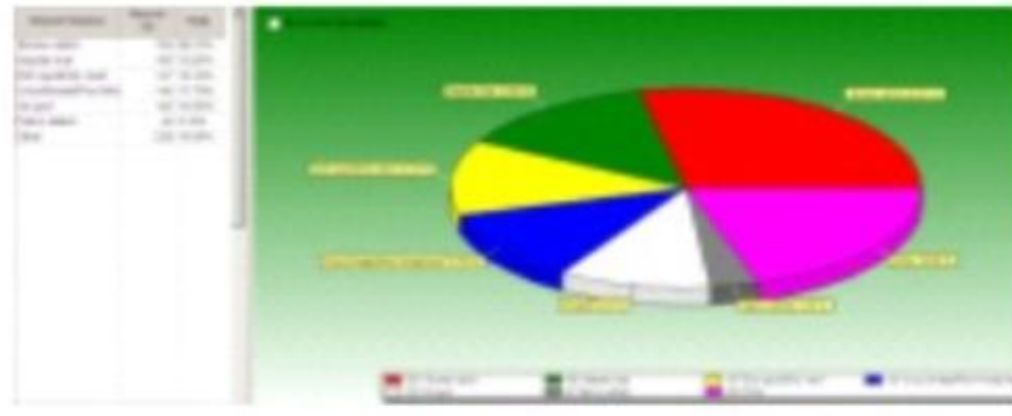
Support real-time monitoring tools for production schedule



Make production tightly close to delivery date, help to resolve the trouble of delay delivery



Support real-time monitoring tools for line balancing



Let manager get the real-time quality question on the live, timely correcting the trend analysis of defect question and warning in advance

## TMIS Contact :

Chaucer Chang (Mr.)  
Director, TMIS (International) Ltd

Whatsapp: 85290177818

852-90177818

chaucer.chang@tmisintl.com

